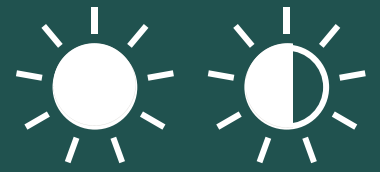


PERENNIAL



Marsh Cinquefoil

Potentilla palustris



WATER GARDEN
LANDSCAPE PLAN

Arcadia
NATIVES

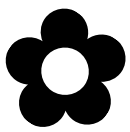


- Native to wetland habitats
- Blooms red/maroon, June-July
- Very cold-hardy; rhizomatous
- Grows in 1-3" standing water
- AKA Bog Strawberry

HELPFUL TIP:

Semi-aquatic. Grows well in poorly drained/mucky soil, ponds, marshes, wet ditches, streambanks, and bogs.

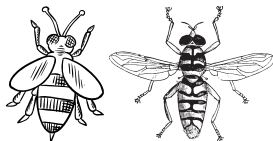
COMPANIONS: Arrowhead, Cardinal Flower, Pickerelweed, Joe Pye Weed, Swamp Rose, Lizard's Tail, Monkeyflower, Blue Flag Iris, Ditch Stonecrop, Obedient Plant, Rushes



Summer
Flowers



Deer
Resistant



Pollinated by
Bees & Flies



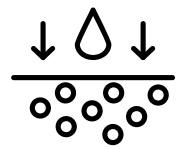
Pond
Margins



Rain
Gardens



Riparian
Buffers



Requires
Wet Soil

Height: 1-2 feet
Spacing: 1-2 feet

Soil: Average, Loam, Clay
Consistently Wet