

PERENNIAL



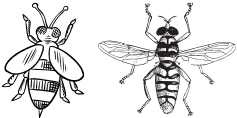
Bishop's Cap

Mitella diphylla

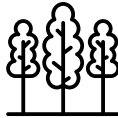
- Native to high quality forests
- Blooms white, April-June
- Tiny snowflake-like flowers are only 1/8" in diameter
- Picky about site conditions



Spring
Flowers



Syrphid Flies &
Short-Tongued Bees



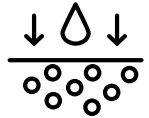
Woodland
Borders



North-Facing
Wooded Slopes



Slow to
Establish



Prefers
Moist Soil

Height: 12 inches

Spacing: 6-12 inches

Soil: Organic, Rich, Humus
Med-Wet, Med, Med-Dry